

Installer Friendly Series® In-Site® Panel

Get In-Site to Your On-Site™ Systems!

Installer Friendly Series® In-Site® event monitoring control panel from SJE-Rhombus®, your trusted on-site control panel provider!

FEATURES:

- 1 **NEMA 4X** weatherproof enclosure for indoor/outdoor use with inner door for added safety
- 2 Separate control and alarm fuses
- 3 **Easy-to-use touch pad** for programming pump control features:
 - Pump run indicator(s)
 - Float status indicators, with float out-of-sequence alarm
 - HAND/OFF/AUTO switch(es)
 - Hand mode safety feature
 - Six digit LED display features:
 - Elapsed time meter(s)
 - Cycle counter(s)
 - Alarm counter
 - Lead/Lag Selector toggles pump operation (duplex models)
 - Float error counter
 - Override counter (timed dose)
- 4 **Service Call** button tracks service provider information
- 5 **USB port** for flash drive (included) to download time-stamped system events
- 6 **Instruction label** on inside cover for viewing and programming digital display, along with easy to read float/pump **wiring diagram**
- 7 Panel can be **easily converted in the field** to demand or timed dose
- 8 **UL/cUL Listed** control system



The NEW Installer Friendly Series® In-Site® control panel allows you to monitor system events with a flash drive!

Monitor system events including pump run times, pump cycles, alarm conditions, power outages, service calls and more! Quick, convenient reports makes diagnosing system conditions easy!

Plug the flash drive into the **USB port** located on the inner door of the **IFS In-Site®** panel to download system events which occurred. No Palm® Pilot or computer is needed at the site! Use the flash drive (which is included with each IFS In-Site® panel) with any computer running Windows® 2000, XP, or Vista® to download system information and reports.

The **pre-loaded software** on the flash drive **formulates system data** for you, **creating reports quickly** in an easy-to-read format so system conditions can be easily identified and corrected. In addition to monitoring system events, the **IFS In-Site®** panel logs any changes made to system settings, which helps protect service providers. The IFS In-Site® panel tracks service calls made to the panel.



SJE-Rhombus®

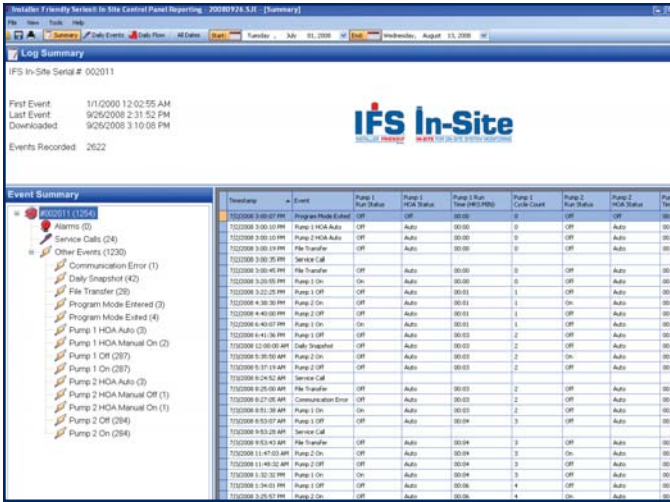


1-888-DIAL-SJE (342-5753) ■ Fax: 218-847-4617

www.sjrhombus.com



Event Log Screen



This screen displays a complete listing of all system events, including:

- Date
- Time
- Code
- Event
- Status

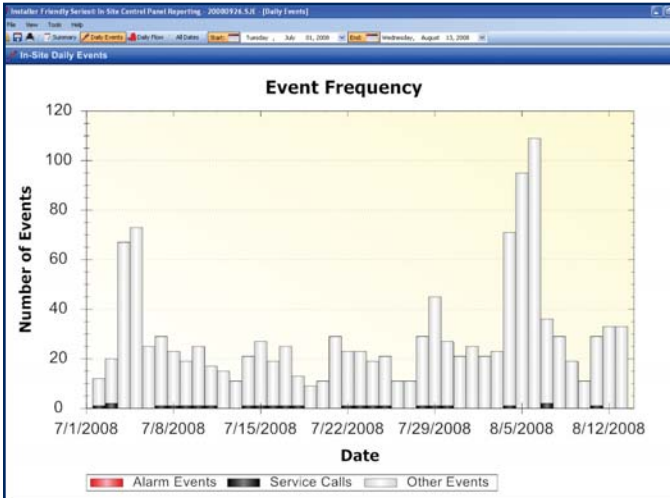
Over 30 days of events are stored.

When capacity is reached, oldest events are replaced with the newest events.

IFS In-Site® Panel Logged Events

EVENT
Not used
High Level Alarm Activation
High Level Alarm Deactivation
Pump 1 Overload Off
Pump 1 Overload On
Pump 2 Overload Off
Pump 2 Overload On
Float Sequence Error
Override Level Off
Override Level On
Pump 1 HOA Manual On
Pump 1 HOA Manual Off
Pump 1 HOA Auto
Pump 2 HOA Manual On
Pump 2 HOA Manual Off
Pump 2 HOA Auto
Program Mode Entered
Program Mode Exited
Pump 1 Off
Pump 1 On
Pump 2 Off
Pump 2 On
Daily SnapShot - Midnight
Power Down
Power Up
Service Call
File Transfer - Flash Drive
Communication Error
Misc Input 1 Off
Misc Input 1 On
Misc Input 2 Off
Misc Input 2 On
Misc Input 3 Off
Misc Input 3 On
Misc Input 4 Off
Misc Input 4 On
Brown Out detect

Daily Events Screen



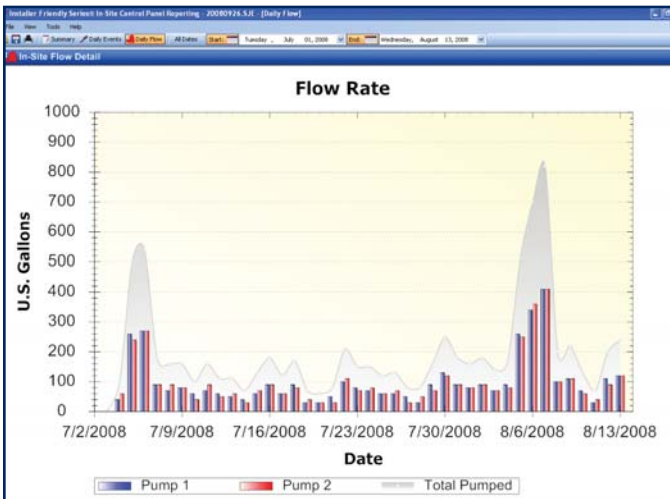
This screen summarizes all events occurring daily:

- Alarm Events
- Service Calls
- Other Events

This graphical display allows user quick access to what is happening in the system.

Clicking on the colored event bar brings up a detailed daily data report for each event.

Daily Flow Screen



This screen summarizes the number of gallons flowing through the system on a daily basis:

- Pump 1 Gallons (Simplex)
- Pump 2 Gallons (Duplex)
- Total Gallons

This report is useful for diagnosing system trends.



1-888-DIAL-SJE (1-888-342-5753) ■ 218-847-1317 ■ Fax: 218-847-4617

www.sjerrhombus.com